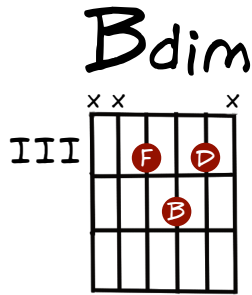


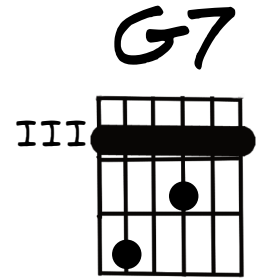
# B E A D Guides Chord Flow

Here's a one practical way approach using diminished chords. It also reveals an inside scoop on the connection between diminished chords and (dominant) 7 chords.

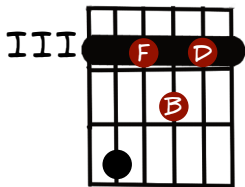
Here's a B diminished chord.



Here's a G7 bar chord. Do you see the similarities?



G7



The B diminished chord is neatly hidden away in the G7 chord. Isn't that cool? It means pretty much anywhere you see a G7 chord, you could substitute in a B diminished chord. (You could also try one of those fancy sounding Bm7b5 chords, or a diminished 7 chord).

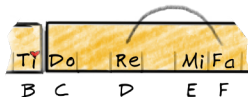
Comparing the notes on a scale ruler is another way to see the similarities and overlap between these chords.

Here's a G7 on the scale ruler

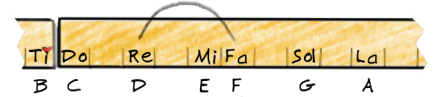


B diminished is hiding here!

Here's a Bdim on the scale ruler



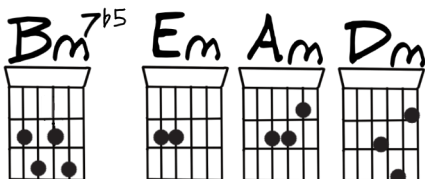
Here's a Bm7b5 on the scale ruler



B diminished is hiding here!

This is true for the dominant seven chord and the diminished chord in any key. Here are the most common ones for guitar:

Key of C's diminished chord



Key of C's dominant 7 chord



- E: B7 and D#m7b5 or D#dim7
- A: E7 and G#m7b5 or G#dim7
- D: A7 and C#m7b5 or C#dim7
- G: D7 and F#m7b5 or F#dim7
- C: G7 and Bm7b5 or Bdim7