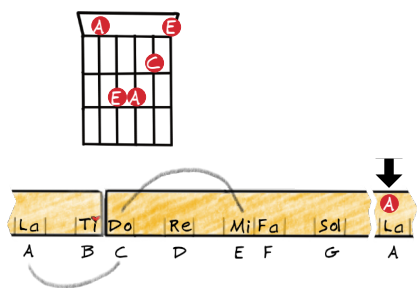


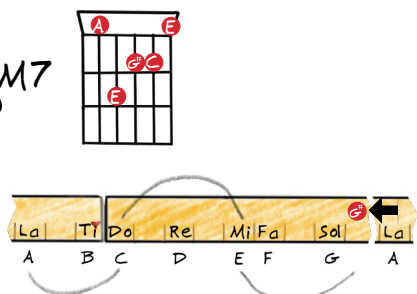
BEAD Guides Chord Flow

Am



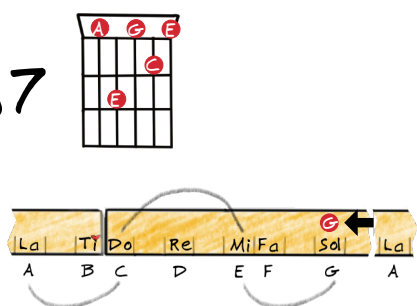
Here's an Am chord. See the higher A note (or La) in the chord on the second fret of string 3? Today we're going to play with that to create a progression that slides fret-wise downwards on the ruler from that A.

Am^{M7}



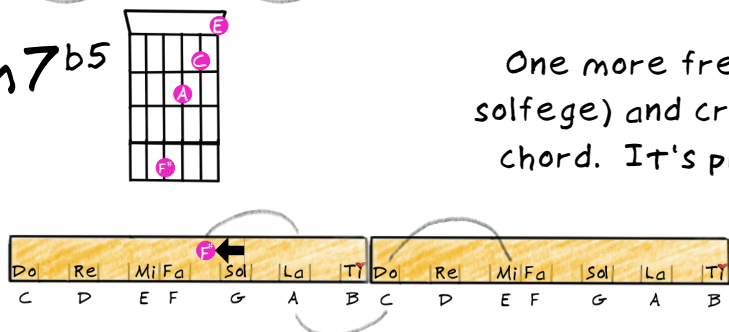
The first (half) step is sliding from A to G# on the third string, which creates a AmMaj7 chord. It's a spicy chord, (with a weird name). You could just turn around and play a C again after it, but we'll keep going.

Am7



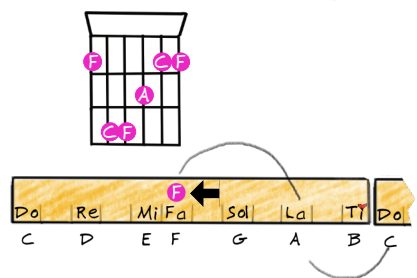
Continuing the fret-wise movement down from G# (or Si in Solfege) we land on G (or Sol), which creates an Am7 chord. Am7 functions a lot like an Am chord, (but has some extra flavor). You could change to any chord you might from Am here. But we're going to continue sauntering downwards.

F#m7^{b5}



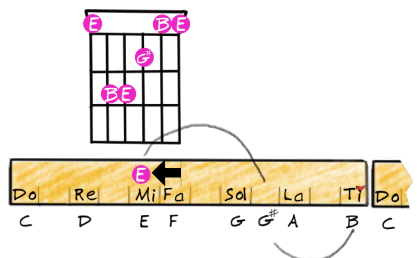
One more fret down from G we land on F#, (Fi in solfege) and create a F#m7b5, a type of diminished chord. It's pretty unstable and wants to keep moving.

F



Sliding down one more fret from F#m7^{b5} flat, we land on F (or Fa) and the F chord. You know F. Again, your options are open, do what you like, but we're going to make one more fret-wise move.

E



Doing so, we end up on E, (why not try E minor too?) After this it'll feel good to return to Am. (I've run out of paper to do that with. And as always, you could try something else too. What sounds good to you?)