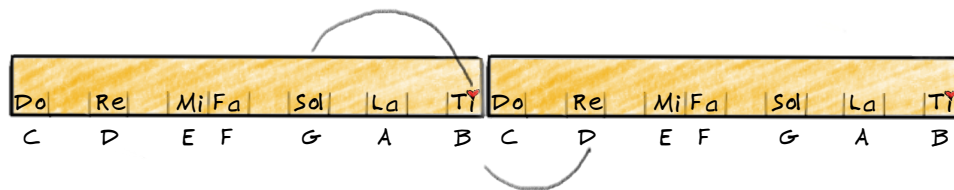


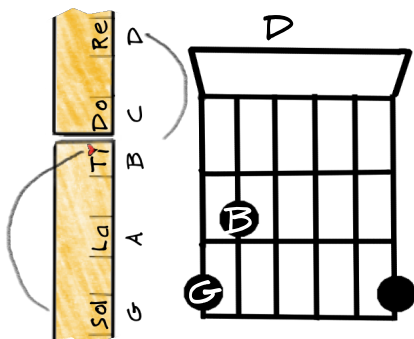
Six String Alchemy:

Mapping the G chord on the fretboard

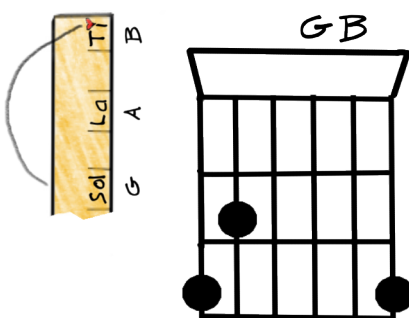
Even though it looks a little different, the G chord follows the same pattern of notes the C chord does. Here's what it looks like woven on the scale ruler:



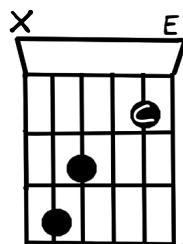
Turning the ruler on its side we can see the G chord chart follow the path laid out by the ruler from lowest to highest, like this:



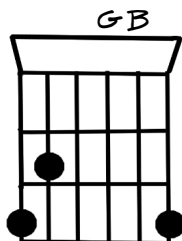
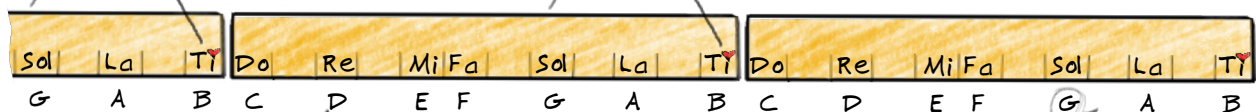
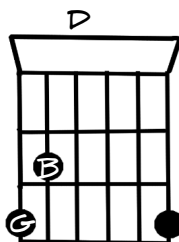
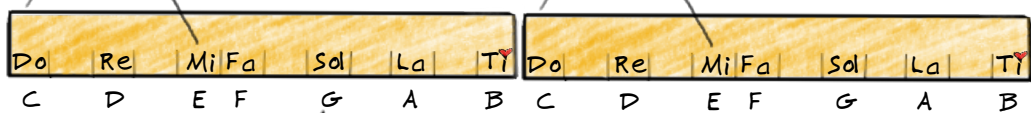
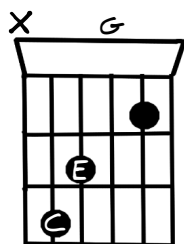
And like the C chord the next notes simply repeats the pattern



It's easiest to see the similarities in the chords here, in the first three notes, they look the same.



Looking at the rulers you can see that the space between the notes C & E, and G & B on the ruler is the same, even though they are patterned differently on the guitar's fretboard.



The highest note in the G chord is simply another G added

