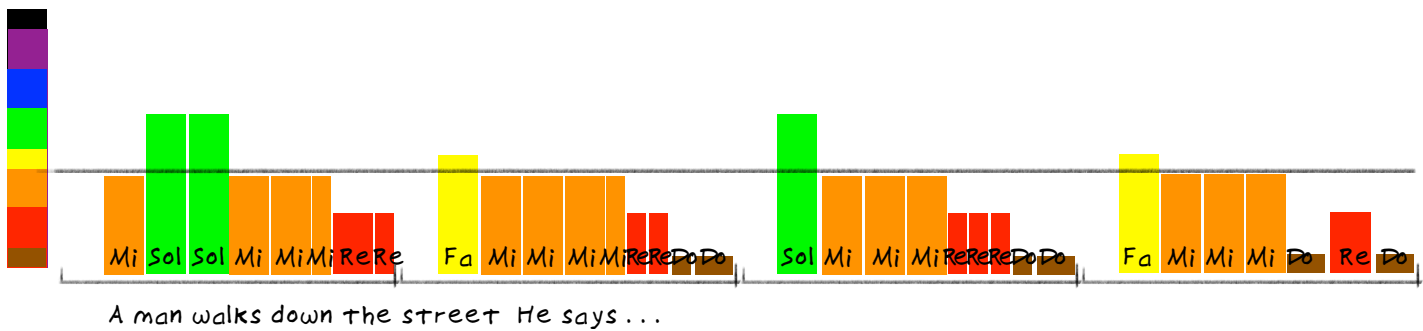


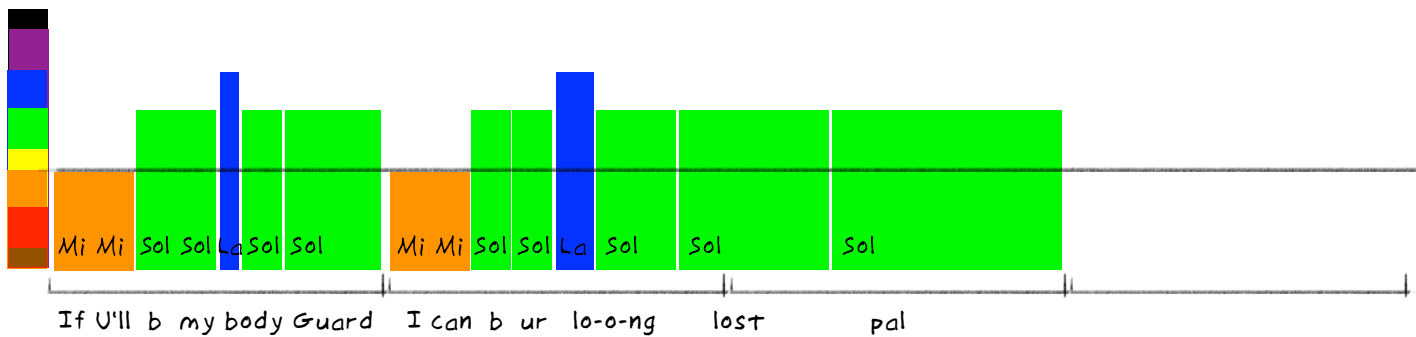
You can call me Al by Paul Simon

(This is a little experimental, (and also time crunched!) Let me know what you think! TimmyRMusic@gmail.com)

Verse's Melodic Visualization:



Chorus' Melodic Visualization:



There's lots you could see here that's different between the verse and chorus. (Though some of it may be hard to interpret right now, sorry!) What I wanted to highlight is how the melody of the verse trends downward from "mi" melodically. The chorus trends upwards from "mi." You could try out something similar in your song this week. You could use "mi" as a starting point, or any other note. You might reverse the directions too, so the chorus trends downward, and the verse up.